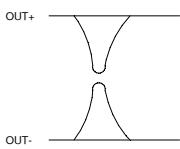


COMPLEMENTARY OUTPUT SIGNALS

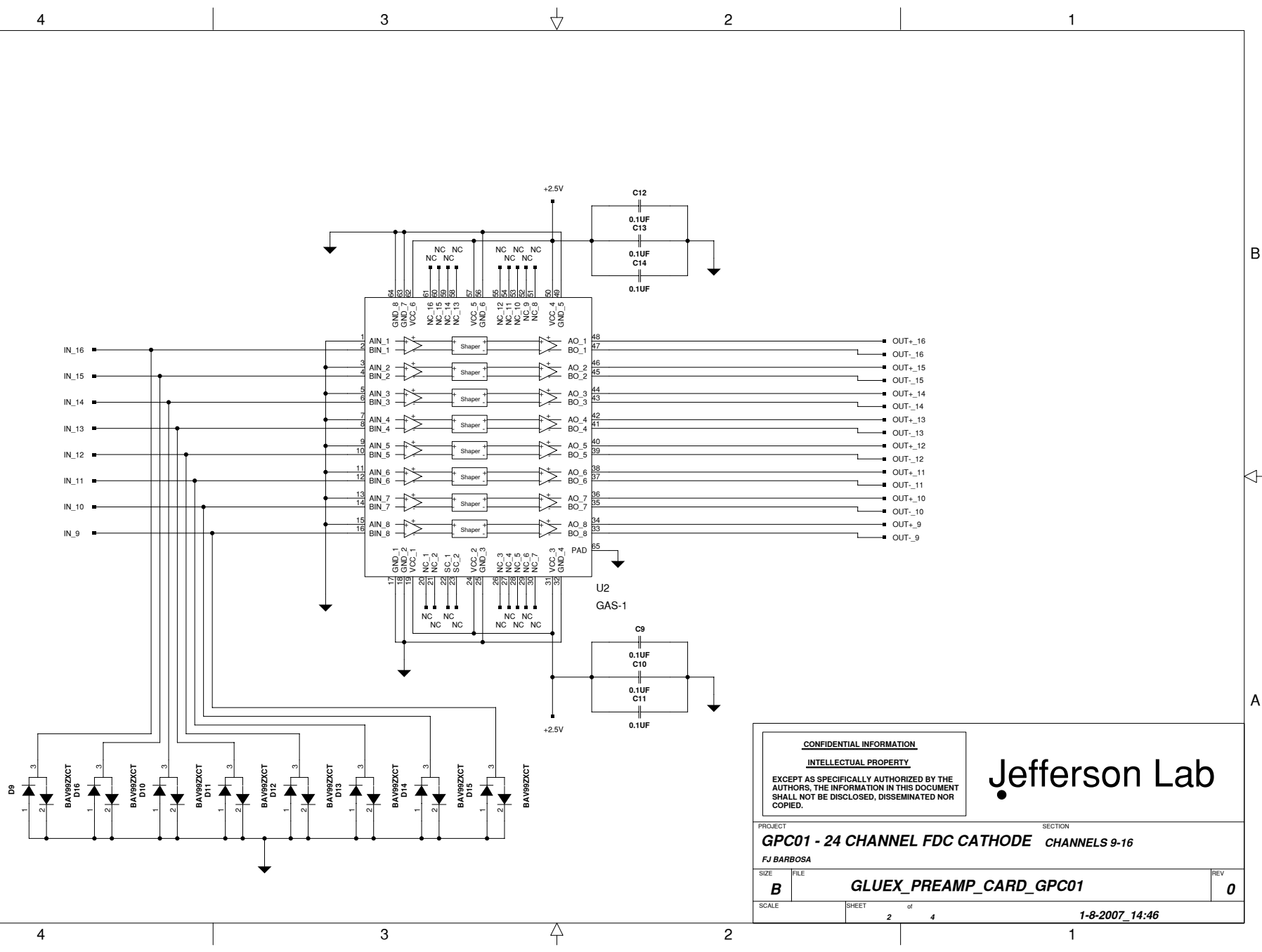


PRELIMINARY

CONFIDENTIAL INFORMATION
INTELLECTUAL PROPERTY
 EXCEPT AS SPECIFICALLY AUTHORIZED BY THE
 AUTHORS, THE INFORMATION IN THIS DOCUMENT
 SHALL NOT BE DISCLOSED, DISSEMINATED NOR
 COPIED.

Jefferson Lab

PROJECT		SECTION	
GPC01 - 24 CHANNEL FDC CATHODE		CHANNELS 1-8	
FJ BARBOSA			
SIZE	FILE	REV	
B	GLUEX_PREAMP_CARD_GPC01	0	
SCALE	SHEET	of	
	1	4	
			1-8-2007_14:46



CONFIDENTIAL INFORMATION
INTELLECTUAL PROPERTY

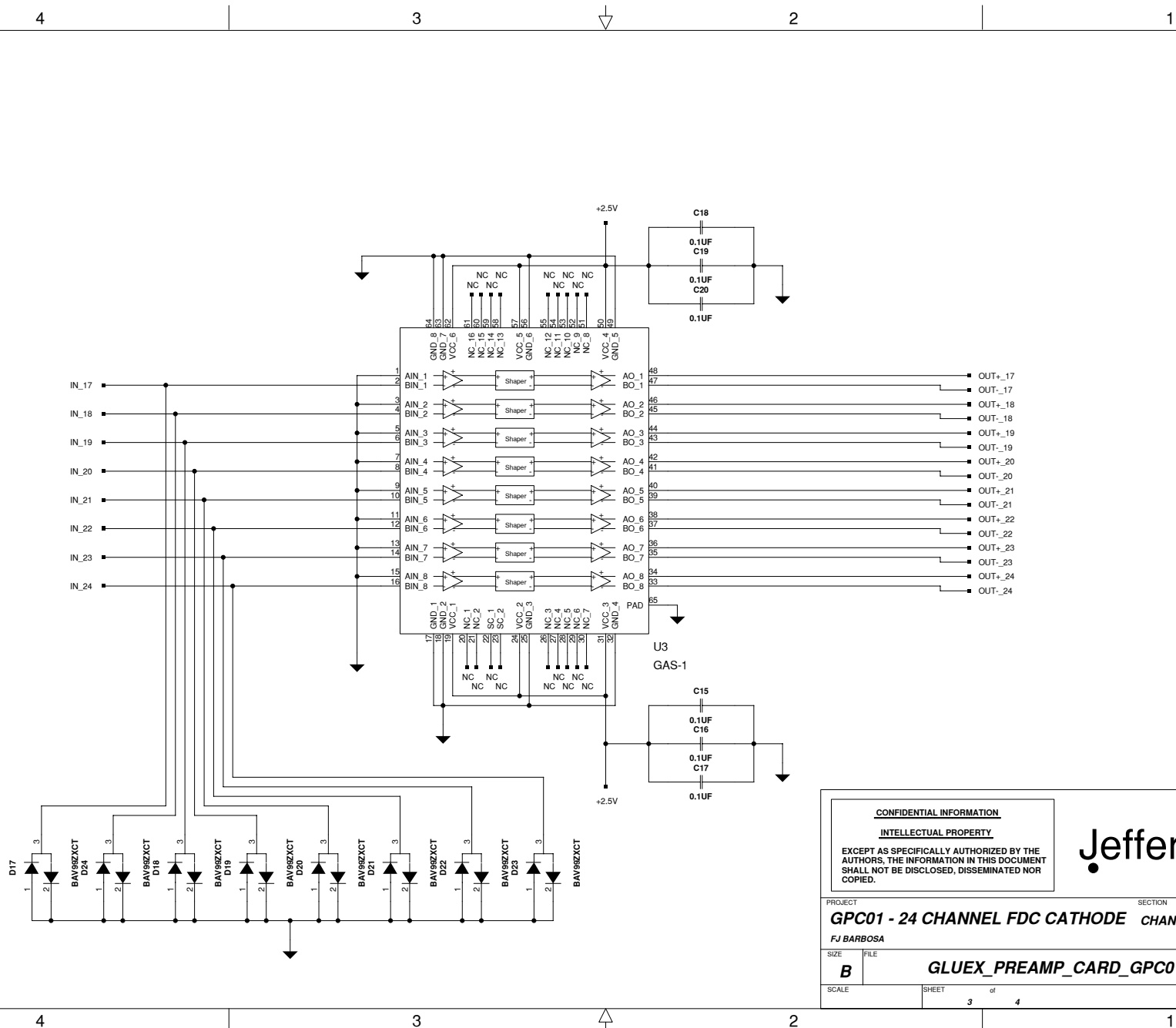
EXCEPT AS SPECIFICALLY AUTHORIZED BY THE
AUTHORS, THE INFORMATION IN THIS DOCUMENT
SHALL NOT BE DISCLOSED, DISSEMINATED NOR
COPIED.

Jefferson Lab

PROJECT: **GPC01 - 24 CHANNEL FDC CATHODE CHANNELS 9-16** SECTION: _____

FILE: **FJ BARBOSA**

SIZE: B	FILE: GLUEX_PREAMP_CARD_GPC01	REV: 0
SCALE: _____	SHEET: 2 of 4	1-8-2007_14:46



CONFIDENTIAL INFORMATION
INTELLECTUAL PROPERTY

EXCEPT AS SPECIFICALLY AUTHORIZED BY THE
 AUTHORS, THE INFORMATION IN THIS DOCUMENT
 SHALL NOT BE DISCLOSED, DISSEMINATED NOR
 COPIED.

Jefferson Lab

PROJECT: **GPC01 - 24 CHANNEL FDC CATHODE CHANNELS 17-24** SECTION: _____

FILE: **GLUEX_PREAMP_CARD_GPC01** REV: **0**

SCALE: _____ SHEET: **3** of **4** DATE: **1-9-2007_11:16**

4

3

2

1

B

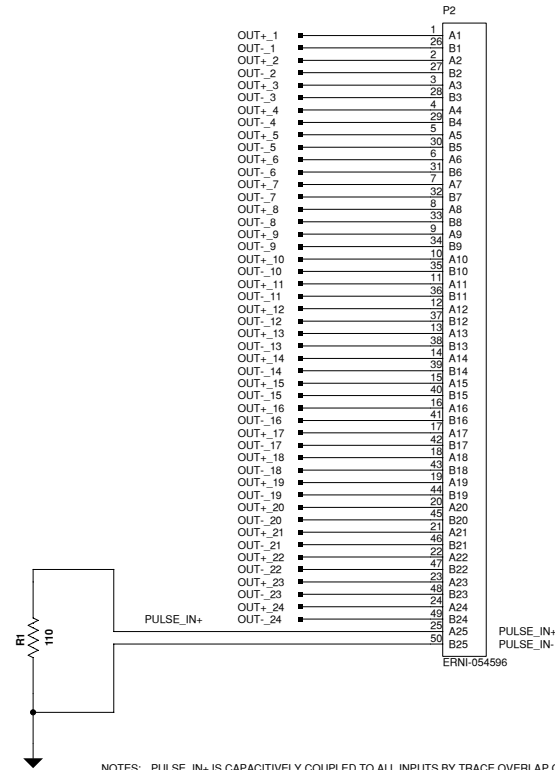
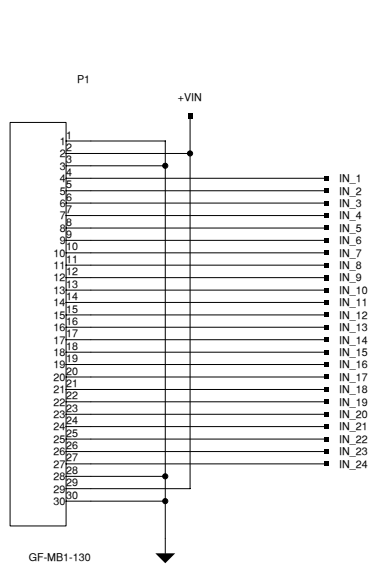
B

A

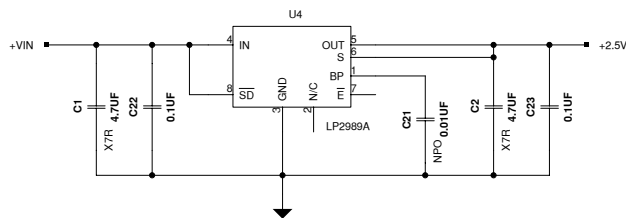
A

INPUT CONNECTOR

OUTPUT CONNECTOR



NOTES: PULSE_IN+ IS CAPACITIVELY COUPLED TO ALL INPUTS BY TRACE OVERLAP ON ADJACENT LAYERS.
 TERMINATION RESISTOR IS LOCATED AT THE END OF THE LINE.



CONFIDENTIAL INFORMATION		<h1>Jefferson Lab</h1>
INTELLECTUAL PROPERTY		
EXCEPT AS SPECIFICALLY AUTHORIZED BY THE AUTHORS, THE INFORMATION IN THIS DOCUMENT SHALL NOT BE DISCLOSED, DISSEMINATED NOR COPIED.		
PROJECT		SECTION
GPC01 - 24 CHANNEL FDC CATHODE		I/O & VOLT REG
FJ BARBOSA		
SIZE	FILE	REV
B	GLUEX_PREAMP_CARD_GPC01	0
SCALE	SHEET	
	4 of 4	1-8-2007_14:46

4

3

2

1

